

Lucid Acoustics Wall Mount Installation Guide

Please Read Completely Before Starting Install



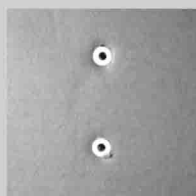
STEP 1: Pictured above is the wall mounting hardware that comes standard with the Echo. All our compact speakers are compatible with many aftermarket wall brackets using a 1/4" threaded nut that is centrally located on the back of the speaker. If you are installing a speaker other than the Echo please refer to the aftermarket bracket for installation instructions, and skip to STEP 2:



ECHO STEP 1: Use the smaller screws to mount half of the sliding wall bracket to the back of the Echo. If you want the speaker mounted vertically mount as shown above. The bracket must taper from wide at the top to narrow at the bottom.



ECHO STEP 2: If you want the Echo to be mounted horizontally you will need to mount the bracket as shown above.



ECHO STEP 3: If no stud is located in the area you want to mount the Echo, you will need to install the molly bolts as shown above. They need a 3/16" hole drilled into the wall. Use the second half of the sliding bracket to mark the wall for proper spacing.



ECHO STEP 4: Using the longer screws mount the second half of the sliding bracket to the wall. This bracket must be mounted vertically and must taper from wide at the top to narrow at the bottom.



STEP 2: In order to make the system look as good as possible you can position the Lucid Acoustics logo as shown above or as shown in STEP 3: The grill has been machined to help you center the sticker on the grill. Look at the back side and view the cut pattern that is designed to align the logo.



STEP 3: Pictured above is the logo placed properly for horizontal mounting.

Speakers are designed to sound the best when the tweeter is directed toward the listener. If you plan on mounting your speakers high on a wall or similar placement where the tweeter will not be aiming at the listener, we recommend using an aftermarket wall mount that can pivot. This will make it possible to aim the speaker toward the listener and improve sound quality.